

Fieldpiece



HVACR TOOLS PROS TRUST

2024 CATALOG

About Us

Fieldpiece Instruments was incorporated June 1990 in the United States to develop tools specifically for HVACR professionals.

Fieldpiece focuses on making the job easier, faster and better for HVACR professionals. Our network of tools is designed to measure just about anything a technician would need to diagnose and repair HVACR systems.

Today, Fieldpiece is the HVACR industry's leading innovator of tool and test instruments. We continue to bring technicians the best tools possible in a changing landscape, including a full lineup of A2L compatible tools.

HVACR professionals trust Fieldpiece to have the right tools to help them do more. Every day.

Table of Contents

Fieldpiece University	2 - 3
Refrigerant Charge	4 - 9
Airflow	10 - 13
Electrical	14- 23
Vacuum & Recovery	24 - 29
Hoses & Fittings	30 - 33
Valve Core Removal Tools	34 - 38
Refrigerant Leak Detection	38 - 41
Heating	42 - 47
Temperature/RH%	48 - 51
Accessories	52 - 55
Index	56 - 57



Keep Learning with Fieldpiece University

HVACR Techs:

- Training on specific applications and techniques.
- Extend your skills and knowledge about various industry topics.
- Video and interactive online training tools.
- Quizzes after the training to cement learnings.

Distributor Partners:

- Training that's focused on helping you find the right product for customers and technicians.
- Resources to help you build your business through a more knowledgeable sales staff.
- Video and interactive online training tools.
- Quizzes after the training to ensure your sales team learned what they need.

Note for Distributors: If you are part of a distributor organization or buying group that already uses its own online university on BlueVolt, then Fieldpiece sales training courses are already available to you there. Please check with your distributor organization or buying group to confirm.

Class is in session. Enroll now!

FIRST TIME BlueVolt learners scan below.



CURRENT BLUEVOLT LEARNERS Scan below to add Fieldpiece University to your profile.



Technicians



Distributors

Refrigerant Charge



SM480V



Wireless SMAN® Refrigerant Manifold 4-port

- Wireless range of 1,000'
- Super rugged construction
- Temperature compensated system tightness test
- Job Link® System enabled
- Data logging
- Water resistant (IP54)



SM380V



Wireless SMAN® Refrigerant Manifold 3-port

- Wireless range of 1,000'
- Super rugged construction
- Temperature compensated system tightness test
- Job Link® System enabled
- Data logging
- Water resistant (IP54)



JL3KH6



Job Link® System Charge and Air Kit

- Wireless range of 1,000'
- Directly connects to mobile device with Job Link® System App
- Fast accurate temps with patented Rapid Rail® technology
- Pressure probe auto calibrates at any elevation
- Configurable psychrometers with flexible probe and sliding magnet
- Water resistant (IP54)



JL3KR4



Job Link® System Charge Kit

- Wireless range of 1,000'
- Directly connects to mobile device with Job Link® System App
- Fast accurate temps with patented Rapid Rail® technology
- Pressure probe auto calibrates at any elevation
- Great for critically charged systems
- Water resistant (IP54)



JL3PR



Job Link® System Pressure Probe

- Wireless range of 1,000'
- 45° angled fitting easily connects in tight spaces
- Pressure sensors are accurate at any elevation
- Great for critically charged systems
- Water resistant (IP55)



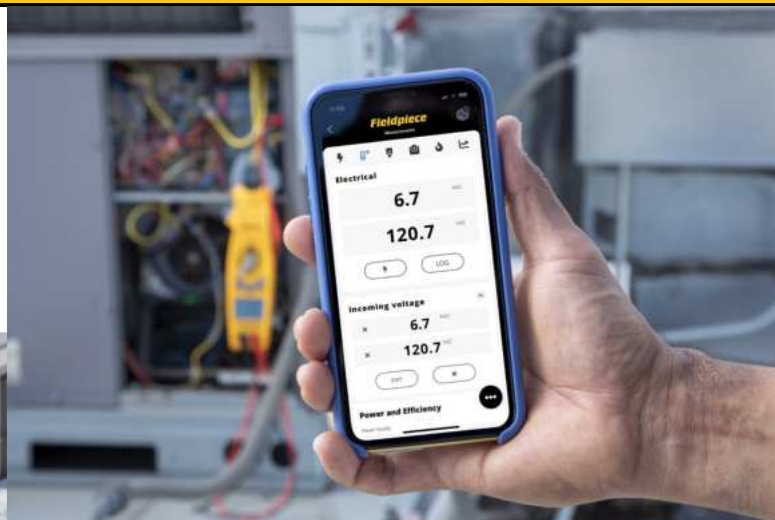
One system does it all - Job Link® System App

The Job Link® System works with all of our wireless tools—from pipe clamps to probes to digital manifolds, and integrates all of their functionality seamlessly. With the Job Link® System App, you'll see a real-time picture of an entire system.

Link Your Tools.

Connect a variety of tools with the most advanced wireless range, up to 1000 feet, to gather real-time system diagnostics across the entire jobsite.

- One-Time Connectivity to Wireless Tools.
- Measurements & Data on a Single Screen.



Job Link® System Mobile App

There are three subscription tiers available, depending on your HVACR business needs. Visit fieldpiecejoblink.com to sign up today!

Job Link Free

- Live measurements
- Advanced calculations
- System diagnostics
- Free PDF reports



Job Link Pro

- Everything in Job Link Free plus:
- Cloud storage
 - Inspection checklists
 - Photos and notes
 - Customer and equipment history
 - Build teams
 - Live Look-in



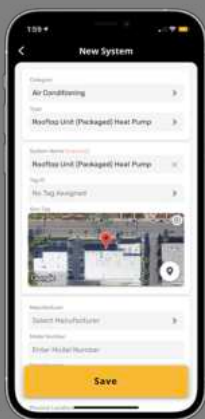
Job Link Pro + Invoicing

- Everything in Job Link Free and Job Link Pro plus:
- Professional invoicing
 - Customizable parts and equipment
 - Customizable hourly rates
 - QuickBooks online integration

Link Your Jobs.

Featuring a work order management system, with geolocation tagging, that eliminates time spent searching for buried details.

- Search, Sort & Manage Jobs by Customer.
- Invoicing Simplified.
- Job Planning Made Easy.



Airflow



JL3KM2



Job Link® System Dual Port Manometer Probe Kit

- 1000' Wireless range
- Precise placement with untethered design
- All-in-one static, gas and draft pressure
- Available as individual tool JL3MN



STA2

Anemometer Hot Wire

- In-duct air balancing with fast response time
- Minimizes turbulence effect
- Hands free testing
- 38" telescoping probe in in-duct traversing
- Dual display shows combo of real-time CFM, air velocity, or temp



SDMN6

Dual Port Manometer w/ Pressure Switch Tester

- Gas, static, and differential pressure
- Test pressure switches
- Easily calibrate any adjustable pressure switch
- Great for diagnosing furnace performance
- Built in continuity tester



SDMN5

Dual Port Manometer

- Measure duct pressures to balance air flow
- Resolution down to 0.01"WC for static pressure measurement
- -60.0"WC to 60.0"WC range
- Includes two 5/16" adapters for measuring inlet and outlet pressures



AAV3

Air Velocity and Temperature Accessory Head

- Measure velocity to calculate CFM
- Large vane covers most of register's free area
- Displays average measurement and real-time
- Works with Fieldpiece Stick Meters



Electrical



Fieldpiece
OFF Hz
100 AAC VAC Hz
600 AAC VAC
Voc Adc
Hz 0/0
W
Ω
NCV
MFD
°C
T1-T2
L1L2
L1L3

Wireless ON/OFF
Range
T°C
Select
ZERO A/C
H/M/m

SC680
AC 0.52 W
0.553 kW

TRUE RMS JOB LINK METER
CAT III 1000V / CAT IV 600V
TYPE K MAX 30V
T1 COM TEMP T2
L1 L2 L3
MAX 1000V

SC680



**600A AC/DC Swivel Clamp Meter
Dual Display - Power - LPF**

- Wireless direct to Job Link® System for electrical documentation
- Measures Power (kW) for system efficiency
- Has True RMS and Low Pass Filter (LPF) to obtain accurate VFD readings
- DC Amps and Diode for mini-split inverters
- Dual temperature for delta T
- Molex test leads for small circuitry
- Test 3-phase with two leads
- Safety rated CAT IV – 600V/CAT III – 1000V



SC640

**400A Swivel Clamp Meter
Dual Display | Inrush**

- Swivel-head with LED jaw flashlight
- Selector dial backlight
- Large backlit display
- Magnetic strap
- Lead storage



Function	SC680	SC640
Volts AC/DC	●	●
Amps AC/DC	●	
600VAC/DC	●	●
750VAC, 1000VDC	●	
Power Factor	●	
Low Pass Filter	●	
Job Link® System	●	
Dual Temp Delta T	●	
Phase Rotation	●	
True RMS	●	●
Inrush	●	●
Swivel Clamp	●	●
Magnetic Strap	●	●
Probe Storage	●	●
Dual Display	●	●
Temperature °F/ °C	●	●
Capacitance	●	●
Duty Cycle %	●	●
400 AAC	●	●
600 AAC/ADC	●	
Microamps DC	●	●
Frequency via Leads/Clamp	●	●
Non Contact Voltage	●	●
50 Mega Ohm with 0.1 Resolution	●	●
Continuity	●	●
Diode Test	●	●
Hold	●	●
Clamp Probe Holder	●	●
Dial Backlight	●	●
Clamp Jaw Light	●	●
LCD Backlight	●	●
Low Battery Indicator	●	●
Battery: 9V, 100 hrs	●	●
Compliance with UL 3rd Edition	●	●
CATIII 600VAC/DC	●	●
UL rated up to CATIII 1000VAC/DC and CATIV 600VAC/DC	●	

SC480



600A Clamp Meter Dual Display | Power

- Wireless direct to Job Link® System for electrical documentation
- Measures Power (kW) for system efficiency
- Has True RMS and Low Pass Filter (LPF) to obtain accurate VFD readings
- Molex test leads for small circuitry
- Test 3-phase with two leads
- Safety rated CAT IV – 600V/CAT III – 1000V



Function	SC480	SC440	SC260
Volts AC/DC	●	●	●
Power Factor	●		
Low Pass Filter	●		
Job Link® System	●		
Phase Rotation	●		
True RMS	●	●	●
Inrush	●	●	
Duty Cycle %		●	
600VAC/DC	●	●	
750VAC, 1000VDC	●		
400 AAC	●	●	●
600 AAC	●		
Magnetic Strap	●	●	●
Dual Display	●	●	
Temperature °F/°C	●	●	●
Capacitance	●	●	●
Microamps DC	●	●	
Frequency via Leads/Clamp	●	●	
Non Contact Voltage	●	●	●
50 Mega Ohm with 0.1 Resolution	●	●	
Continuity	●	●	●
Diode Test	●	●	●
Hold	●	●	●
Clamp Probe Holder	●	●	
Clamp Jaw Light	●	●	
LCD Backlight	●	●	●
Low Battery Indicator	●	●	●
Battery: 9V, 100 hrs	●	●	
Battery: 9V, 150 hrs			●
Compliance with UL 3rd Edition	●	●	●
CATIII 600VAC/DC	●	●	
UL rated up to CATIII 1000VAC/DC and CATIV 600VAC/DC	●		

SC440

400A Clamp Meter Dual Display | Inrush

- Sturdy magnetic strap
- True RMS
- Inrush current
- Test-lead holder
- Magnetic Strap



SC260

400A Clamp Meter Compact

- True RMS
- Volts AC/DC
- Temperature
- Magnetic Hanger
- Bright backlight



HS36

**Stick Style Multimeter
True RMS with Backlight**

- Works with all accessory heads
- Non-contact voltage
- Microamps DC for flame diodes
- 400 AAC with included amp clamp
- Temperature up to 1000 F°
- Lead storage



HS33

**Stick Style Multimeter
Manual Ranging**

- Works with any accessory head
- Non-contact voltage
- Microamps DC for flame diodes
- 400 AAC with included amp clamp
- Temperature up to 1000 F°
- Convenient lead storage
- Safe one-handed testing



ACH4

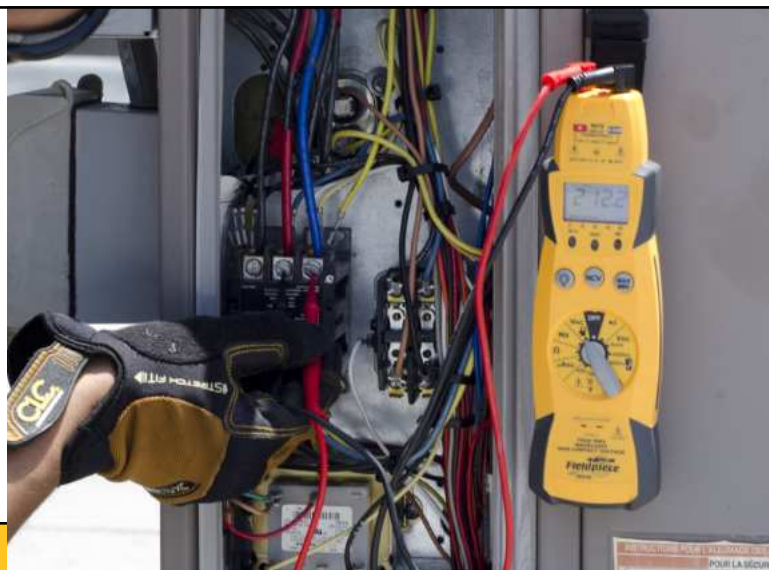
**400A Amp Clamp
Accessory Head**

- Jaw claw helps isolate wires for testing
- Find run/start amps of motors and compressors
- Great partner for stick multimeters
- Angled jaw opens to 1.8"



HS33	HS36	Function	Range	Accuracy/Resolution
Manual	Auto	Ranging		
2000	4000	Counts		
Average	True RMS	AC Conversion		
●	●	Backlight		
	●	Bar Graph		
	●	VAC	200m	1.2% + 5/0.1m
	●		2000m	1.5% + 5/1m
	●		40	1.5% + 5/0.01
●	●		200	1.5% + 5/0.1m
●	●		600	2% + 5/1
●	●	VDC	200m	0.5% + 2/0.1 m
●	●		2000m	0.5% + 2/1m
	●		20	0.5% + 2/0.01
●	●		200	0.5% + 2/0.1
	●		600	0.5% + 2/1
●	●	AAC	20	2.7% + 7/0.1
●	●		100	3.7% + 8/0.1
●	●		400	5.0% + 10/1
	●	ADC	400μ	1% + 2/0.1 μ
	●		4000μ	1% + 2/1 μ
●	●	°F	200° F	1° F/0.1
	●		1000° F	1° F/1
●	●	MFD	200	3% + 5/0.1m
●	●	Hi-V Indicator		>30V
●	●	NCV		>24VAC
●	●	Ohms	200	1% + 4/0/1
	●		4K	1% + 4/1
	●		40K	1% + 4/10
●	●		200K	1% + 4/100
	●		4M	1.5% + 4/1K
	●		20M	3% + 5/10K
●	●	Continuity		
●	●	Diode		
	●	HZ		

● With ACH4 clamp head, ● LED and beeper, ● Range is 40XX, not 20XX
Temperature accuracies shown are after simple field calibration



LT17A

Digital Multimeter

- Temperature up to 1400 F°
- 400 AAC with included clamp
- Capacitance up to 200MFD
- Works with accessory heads
- Microamps for flame diode test
- Frequency for motor setup



ADA2

Dual Alligator Clips

- Vinyl insulated cables
- 3.5 feet long



SNCV1

Non-Contact Voltage Tester

- Detects live AC voltage without contact
- Bright LED and loud beeper
- Range: 24VAC to 440VAC
- Senses 24VAC for thermostat power



ASLS2

Silicone Test Leads

- High copper strands, silicone insulated test leads
- Basket style strain relief



SMG5

Megohmmeter

- Helps predict compressor failure
- One handed testing
- Long probe tip for hard to reach terminals
- Bright backlight



ADLS2

Deluxe Silicone Test Leads

- High copper strands, silicone insulated test leads
- Basket style strain relief
- Removable probe tips



ADK7

Deluxe Test Lead Kit

- Silicone test leads
- Alligator clips
- Molex tips



Vacuum & Recovery



VPX7



10 CFM Vacuum Pump

- 10 CFM flow rate with 15 microns ultimate vacuum
- ¾ HP DC motor
- Weighs 24 lbs. - Patented lightest weight
- RunQuick® Oil Change System offers on-the-fly oil changes in seconds
- Port Sizes: (1) 1/4", (2) 3/8", (1) 1/2"
- Small footprint – 1,346 cubic inches
- AL2 Certified



OIL8X3

3 Pack Vacuum Pump Oil

- Three eight-ounce containers of vacuum pump oil
- Low vapor pressure ideal for pulling vacuums
- Wide temperature range helps oil perform in any conditions
- Highly refined for consistent performance
- Ensures proper sealing and lubrication
- Designed to work with our RunQuick® Oil Change System



VP87



8 CFM Vacuum Pump

- 8 CFM flow rate with 15 microns ultimate vacuum
- ¾ HP DC motor
- Weighs 27 lbs.
- RunQuick® Oil Change System offers on-the-fly oil changes in seconds
- Port Sizes: (1) 1/4", (2) 3/8", (1) 1/2"
- Small footprint – 1,346 cubic inches
- AL2 Certified



OIL32

Quart Vacuum Pump Oil

- Quart-size container of vacuum pump oil
- Low vapor pressure ideal for pulling vacuums
- Wide temperature range helps oil perform in any conditions
- Highly refined for consistent performance
- Ensures proper sealing and lubrication
- Designed to work with our RunQuick® Oil Change System



VP67



6 CFM Vacuum Pump

- 6 CFM flow rate with 15 microns ultimate vacuum
- ½ HP AC motor
- Weighs 29 lbs.
- RunQuick® Oil Change System offers on-the-fly oil changes in seconds
- Port Sizes: (1) 1/4", (2) 3/8", (1) 1/2"
- Small footprint – 1,346 cubic inches
- AL2 Certified



OIL128

Gallon Vacuum Pump Oil

- Gallon-size container of vacuum pump oil
- Low vapor pressure ideal for pulling vacuums
- Wide temperature range helps oil perform in any conditions
- Highly refined for consistent performance
- Ensures proper sealing and lubrication
- Designed to work with our RunQuick® Oil Change System



MG44



Wireless Vacuum Gauge

- Confidently perform evacuations with a reliable, leak-proof seal
- Reversible angled coupler and new cylindrical design are easier to fit into tight spaces
- There are three ways to use: 1) Directly from the MG44's display, 2) up to 1000' away via the Job Link® mobile app, or 3) on the Fieldpiece SMAN® Refrigerant Manifold
- Three ways to view: New larger backlit LCD screen is easier to read and its dot-matrix display shows more info including 1) rate, 2) bar graph, and 3) rate meter
- IP54-rated weather-resistant



MR45



Digital Recovery Machine

- DC Motor: 1 HP (variable smart speed)
- Starts and runs easily with lower voltage
- Minimizes liquid slugging and maximizes vapor recovery
- 3 selectable auto stop levels
- Easy access ports
- Water resistant to withstand direct rain
- R32 Ready



SR47



Wireless Refrigerant Scale

- 13" platform to fit larger tanks
- Max load 252 lbs (114 kg)
- Water resistant
- 200 hour platform battery life
- Long range wireless
- Connect to Job Link® System Mobile App
- Integrated bumpers for increased durability



SRS1



Refrigerant Scale

- Charging & recovery weight alarms
- Easy to carry
- 0.25 oz (0.01 kg) resolution
- Maximum load: 110 lbs (50kg)
- Accuracy: $\pm(0.05\%rdg + 10g)$
- Water resistant



S365

Charging Jacket for TXV Systems

- Charge from 37-70°F outside temperatures
- Service maintenance contracts before and after summer heat
- Extend billable hours
- Easy to adjust to reach correct pressure differential
- Looks professional



Hoses & Fittings



Charging Hoses and Hose Sets



- Rugged Full-Ring Triple Crimp
- Customizable Hose Color Tags
- 4-Layer Construction



	1/4" Charging Hose Set (3)	1/4" Charging Hose	5/16" Charging Hose Set (3)*	5/16" Charging Hose
Ball Valves	HR3B	HR1B	HR3BM	HR1BM
Low Loss Valves	HR3L	HR1L	HR3CM	HR1LM
Open Fittings	HR3	HR1		
Ball Valve (1) Low Loss Valves (2)	HR3C			

*5/16" Charging Hose Set comes with (2) 5/16" hoses, with stated valve type, and (1) 1/4" Ball Valve Hose. (3) hoses total.

RHCM



5/16" to 1/4" Straight Adapter

- Durable, Machined Brass with Valve Core



RHCM45



5/16" to 1/4" Angled Adapter

- Durable, Machined Brass with Valve Core



Vacuum Hoses



- Rugged Full-Ring Triple Crimp
- 3/8" I.D. for Rapid Evacuation
- 4-Layer Construction



	3/8" x 3/8" Fittings	3/8" x 1/4" Fittings
3/8" Vacuum Hose	HV1	HV1S

RHG12



Hose Gaskets + Depressors

- (8) 1/4" Threaded Core Depressors
- (8) 1/4" Gaskets
- (4) 3/8" Gaskets



Hose Extensions

- Rugged Full-Ring Triple Crimp
- Customizable Hose Color Tags
- 4-Layer Construction



	1/4" Ball Valve	1/4" Open	1/4" A2L Adapter
Hose Extensions	HR3XB	HR3X	HR1XR

HCT6



Spare Color Tag Set

- Quantity = 6
- 2 Red, 2 Yellow and 2 Blue



Valve Core Removal Tools



VC2G



Dual Valve VCRT with Sight Glass

- Swappable service port fitting
- Sight glass to verify captured valve core
- Second ball valve protects your vacuum gauge
- Magnetic comfort spinner
- Vacuum-rated to 20 microns



RVC4 | RVC5



Swappable Port Fittings

- Easily convert your VC2G, VC1G, or VC1 between 1/4" and 5/16"
- Includes 5 spare o-rings & storage tube
- 1/4" Replacement Fitting (RVC4)
- 5/16" Replacement Fitting (RVC5)



RVC4

RVC5

VC1G



Single Valve VCRT with Sight Glass

- Swappable service port fitting
- Sight glass to verify captured valve core
- Magnetic comfort spinner
- Vacuum-rated to 20 microns



RVCG10



Replacement VCRT Fitting Gaskets

- VCRT Fitting Gaskets, Qty 10

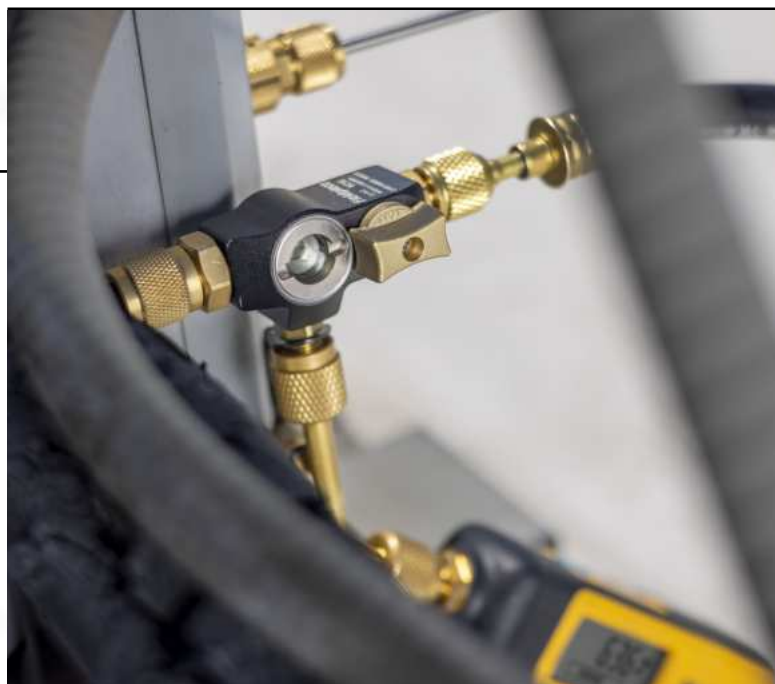


VC1



Compact Single VCRT

- Swappable service port fitting
- Compact size for tight space access
- Magnetic capture rod knob
- Vacuum-rated to 20 microns



Refrigerant Leak Detection



DR82



Infrared Refrigerant Leak Detector

- State-of-the-art infrared sensor
- Large backlit LCD screen provides clear, easy-to-see information
- Sensitivity better than 0.03 oz/yr (1g/a)
- Detects all HFC, CFC, HCFC, HFO and blends
- Flashing lighted tip, loud beeper and leak rate indicator
- Doesn't trigger on soap bubbles and oil



DR58



Heated Diode Refrigerant Leak Detector

- Sensitivity better than 0.03 oz/yr (1g/a)
- Bright, LCD screen with easy-to-see bar graphs and numeric readings
- 18-hour USB rechargeable lithium-ion battery
- Detects all HFC, CFC, HCFC, HFO, H2N2 (Tracer Gas) and blends
- Flashing lighted tip, multiple alarms, and numerical leak size indicator
- Manual or automatic zeroing
- Great performance on R410A



RFT6

All in one, replaceable filter tips



Heating



CAT45



Combustion Analyzer

- Accurately measure O₂, CO, CO₂, draft pressure
- Four-year sensor warranty
- Large 5.5" touchscreen display
- Field-replaceable sensors
- SensorVault™ Technology
- Connect with Job Link® System App, industry-leading 1000' wireless range



SCM4

Carbon Monoxide Detector

- Field-replaceable CO sensor
- Calibrate to ambient quickly with the ZERO button
- Audio/visual alarms with mute
- Fast electro-chemical sensor
- Magnetic hanger for hands free



CAT85



Combustion Analyzer HC

- Accurately measure O₂, CO, CO₂, live draft pressure
- Built-in dual-port manometer
- SensorVault™ Technology
- HydroCycle™ Pump Technology
- Four-year sensor warranty
- Large 5.5" touchscreen display
- Connect with Job Link® System App, industry-leading 1000' wireless range



SOX3

Combustion Checker with Auto Pump

- Measures flue temp and %O₂
- Calculates %CO₂, %EA, and combustion efficiency
- Hands-free testing with magnet, R-cone, and automatic pump
- Programmable for custom fuel types



CATPR

Wireless Thermal Printer

- Compatible with Fieldpiece combustion analyzers
- Compact and portable
- Easy operation, drop-in paper loading
- Rechargeable lithium battery



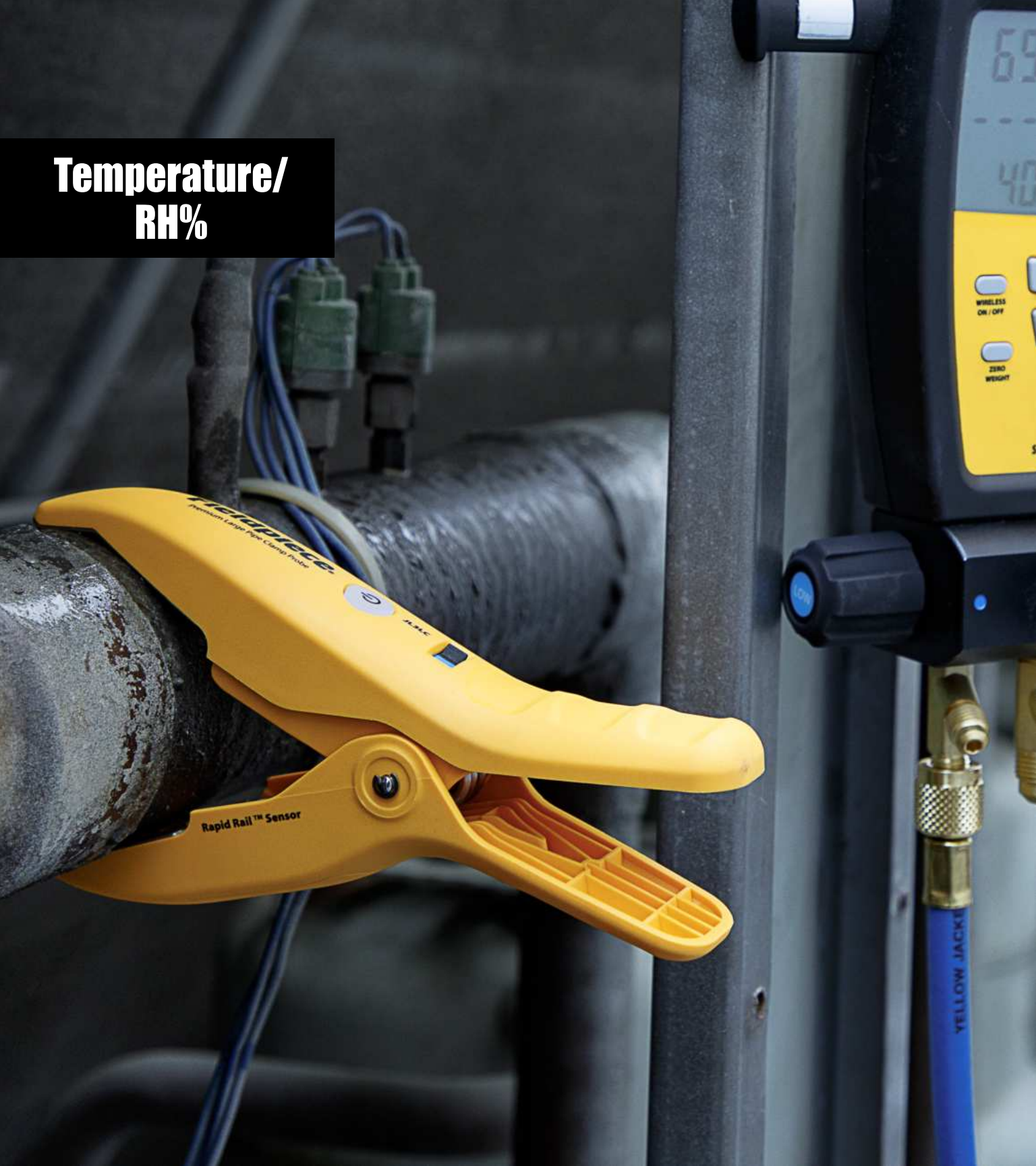
SDMN6

Dual Port Manometer w/ Pressure Switch Tester

- Gas, static, and differential pressure
- Test pressure switches
- Easily calibrate any adjustable pressure switch
- Great for diagnosing furnace performance
- Built in continuity tester



**Temperature/
RH%**



JL3RH



Job Link® System Flex Psychrometer Probe

- Powerful 1000' wireless range direct to Job Link App on mobile device
- Communicates with Job Link App and Wireless Manifolds (SM380V/SM480V)
- Strong magnetic hanger
- Supply and return side switch
- Water resistant



SIG1

Gun Style IR Thermometer with Laser

- Accurate surface temperatures
- 10:1 field of view
- Select °F or °C
- Range: -22°F to 1022°F



SRH3

Psychrometer Telescoping Wand

- In-duct target superheat & target evaporator exit temp
- Wet bulb, temps, dew point, and %RH
- Hands free testing
- 38" telescoping probe
- Quickly takes readings from the center of the duct



SPK1

Pocket Knife Style Thermometer

- Detent holds rod in 16 positions
- Temperature range: -58°F to 392°F
- Stainless Steel
- Max/min/hold



PRH2

Digital Pocket Psychrometer

- Wet bulb, dry bulb, dew point, %RH
- Quick walk-around measurements
- Easy in duct readings
- Helps calculate target superheat



SPK2

In-duct Thermometer

- Quick and easy in-duct measurements
- Temperature range: -58°F to 392°F
- Hanging hook
- Bright backlight



ST4

Dual Temperature Meter Type K

- Two Type-K thermocouples included
- Accepts any Type-K thermocouple
- Resolution of 0.1 degree F
- Separate MIN/MAX and HOLD buttons
- Easy field calibration



SPK3

Thermometer – Compact Type K - Infrared

- Convenient 2-Way Temp | Rod/IR
- 8:1 IR
- Hands free in-duct temps
- Quick T1-T2 calculations
- Max/min/hold



TC48

Large Pipe Clamp

- Jaw range between 3/4" to 4 1/8"
- Extremely accurate and quick
- Patented Rapid Rail® Sensor
- Single-hand operation
- Compact design



JL3LC



Job Link® System Large Pipe Clamp

- Jaw range between 3/4" to 4 1/8"
- Extremely accurate and quick
- Patented Rapid Rail® Sensor
- Works wirelessly up to 1,000'
- Communicates with Job Link App and Wireless Manifolds (SM380V/ SM480V)



JL3PC



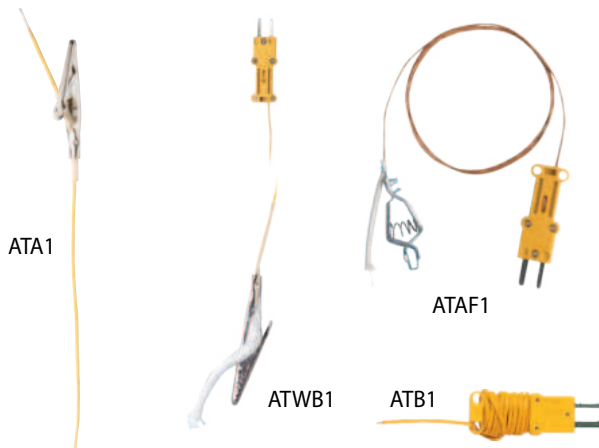
Job Link® System Premium Pipe Clamp Probe

- Jaw range between 1/4" to 1 3/8"
- Powerful 1000' wireless range
- Stabilizes in 3 seconds with +/- 1° F accuracy
- Patented Rapid Rail®/R Sensor
- Communicates with Job Link App and Wireless Manifolds (SM380V/SM480V)



Fieldpiece Thermocouples

All Fieldpiece thermocouples work with Fieldpiece meters that take temperature.



TC24

Pipe Clamp Thermocouple

- Works on pipes between 3/8" and 1 3/8"
- Ideal for residential and light commercial cooling systems
- Accuracy: ±1°F (0.5°C) after field calibration (meets California's Title 24 specifications)



ATC1R

Small Clamp Thermocouple

- Works on pipes between 1/8" to 3/4"
- Accuracy: +/- 4°F (2°C) ; ±1°F (0.5°C) after field calibration, 32 to 176°F (0 to 80°C)
- Temperature range: -50 to 257°F (-46 to 125°C)



Model	Description	MAX° F PROBE TEMP
ATAI	Bead type with alligator	400
ATWBI	Wet bulb (sock) with alligator	200
ATAFI	HI-temp bead type with alligator	900
ATBI	Bead type standard	400

Accessories



BG36

Inspection Tool Bag

- Quick locking magnetic closure
- Isolated pockets for test instruments
- Weather protected sturdy base
- Compact rugged design



BG44

Service Tool Bag

- Rugged, elevated rack for hand tools
- Padded pockets to protect meters
- Magnetic tray
- Quick carry single strap
- Compact rugged design



PLM2

Lighted Mirror Tool

- Adjusts in any direction
- LED light
- Detach the mirror to use as flashlight



Product		Pages
AAV3	Air Velocity and Temperature	13
ACH4	Current Clamp	20
ADA2	Dual Alligator Clips	23
ADK7	Deluxe Test Lead Kit	23
ADLS2	Deluxe Silicone Test Leads	23
ASLS2	Silicone Test Leads	23
ATA1	T/C-Bead with Clip	51
ATAF1	T/C-HiTemp with Clip	51
ATB1	T/C-Bead	51
ATC1R	T/C-Clamp (1/8 - 3/4")	51
ATWB1	T/C-Wet Bulb with Clip	51
BG36	Inspection Tool Bag	54
BG44	Service Tool Bag	55
CAT45	Combustion Analyzer	44
CAT85	Combustion Analyzer HC	44
CATPR	Wireless Thermal Printer	44
DR58	Heated Diode Refrigerant Leak Detector	40
DR82	Infrared Refrigerant Leak Detector	40
Hoses	Hoses and Fittings	32
HS33	Stick Meter	20
HS36	Stick Meter	20
JL3KH6	Job Link® System Charge and Air Kit	06
JL3KM2	Job Link® System Dual Port Manometer Probe Kit	12
JL3KR4	Job Link® System Charge Kit	07
JL3LC	Job Link® System Large Pipe Clamp	47
JL3MN	Job Link® System Single Port Manometer Probe	12
JL3PC	Job Link® System Premium Pipe Clamp Probe	50
JL3PR	Job Link® System Pressure Probe	07
JL3RH	Job Link® System Flex Psychrometer Probe	48
LT17A	Digital Multimeter	22
MG44	Wireless Vacuum Gauge	28
MR45	Recovery Machine	29
PLM2	Lighted Mirror Tool	54
PRH2	Digital Pocket Thermometer	48
RFT6	Leak Detector Replaceable Filter Tips	40
RVC4	1/4" Replacement Fitting	37
RVC5	5/16" Replacement Fitting	37
RVCG10	Replacement VCRT Fitting Gaskets	37
S365	Charging Jacket	29
SC260	Compact Clamp Meter	18

Product		Pages
SC440	Essential Clamp Meter	18
SC480	Wireless Power Clamp Meter	18
SC640	Loaded Clamp Meter	16
SC680	Wireless Power Clamp Meter	16
SCM4	Carbon Monoxide Detector	45
SDMN5	Dual Port Manometer	12
SDMN6	Dual Port Manometer and Pressure Switch Tester	12
SIG1	Gun Style IR Thermometer with Laser	49
SM380V	3 Port Digital Manifold	07
SM480V	4 Port Digital Manifold	06
SMG5	Megohmmeter	22
SNCV1	Non-contact Voltage Tester	22
SOX3	Combustion Check with Automatic Pump	45
SPK1	Compact In-Duct Thermometer	49
SPK2	In-Duct Thermometer	49
SPK3	Rod and IR Temperatures	49
SRS1	Wired Refrigerant Scale	28
SR47	Wireless Refrigerant Scale	28
ST4	Dual Temperature Thermometer	48
STA2	In Duct Hot-wire Anemometer	13
TC24	Pipe Clamp Thermocouple	50
TC48	Large Pipe Clamp Thermocouple	50
VP67	6 CFM Vacuum Pump	26
VC1	Compact Single Valve Core Removal Tool	36
VC1G	Single Valve VCRT with Sight Glass	36
VC2G	Dual Valve VCRT with Sight Glass	36
VP87	8 CFM Vacuum Pump	26
VPX7	10 CFM Vacuum Pump	26
VP-OIL	Vacuum Pump Oil	27



© 2024 Fieldpiece Instruments, Inc. All rights reserved.

Fieldpiece Instruments, Inc.
1636 West Collins Ave
Orange, CA 92867
(714) 634-1844



Q2v03